

SOME NEW MIMETID SPIDERS FROM NORTH QUEENSLAND, AUSTRALIA
(ARACHNIDA, ARANEAE, MIMETIDAE)

STEFAN HEIMER

Heimer, S. 1989 11 13: Some new mimetid spiders from north Queensland, Australia (Arachnida, Araneae, Mimetidae). *Mem. Qd Mus.* 27(2): 433-435. Brisbane. ISSN 0079-8835.

Mimetus catulli sp. nov. and *Mimetus hannemanni* sp. nov. are the first records from Australia of the recently delimited genus *Mimetus*. They were discovered along with *Australomimetus andreae* sp. nov. on Bellenden Ker Range, north Queensland, by a combined Queensland Museum-Earthwatch expedition in October, 1981.

Mit *Mimetus catulli* sp. nov. und *Mimetus hannemanni* sp. nov. werden erstmals Vertreter der Gattung *Mimetus* in Australien nachgewiesen. Beide Arten wurden zusammen mit *Australomimetus andreae* sp. nov. in Bellenden Ker Range, Nord-Queensland, durch die Queensland Museum-Earthwatch Expedition im Oktober 1981 gesammelt.

□ *Taxonomy, Mimetus, Australomimetus, Mimetidae*

Stefan Heimer, Staatliches Museum für Tierkunde, Augustusstr. 2, Dresden, DDR-8010, German Democratic Republic; 9 March, 1988.

A number of mimetid spiders were collected during a combined Queensland Museum-Earthwatch expedition to Mt Bellenden Ker and Mt Bartle-Frere, North Queensland. The results of some observations on these spiders are given here. These provide some new records of *Australomimetus* as well as description of three new species of the genera *Australomimetus* and *Mimetus*. This is the first record of *Mimetus* species from Australia since taxonomic changes introduced by Heimer (1986). All specimens mentioned in this paper are deposited in the Queensland Museum (QM), Brisbane, Australia.

Mimetus catulli sp. nov.
(Figs 1, 2)

MATERIAL EXAMINED

HOLOTYPE: QM S6741, male from Bellenden Ker Range, Cableway Base Station, 100m, October 17-24, 1981.

DESCRIPTION

Cephalothorax: 2.3mm long, 1.7mm wide, light yellow. Between fovea and eye region an irregular bordered band, light brown. Maxillae and sternum yellow, labium yellowish brown, chelicerae brown, its basic parts yellowish.

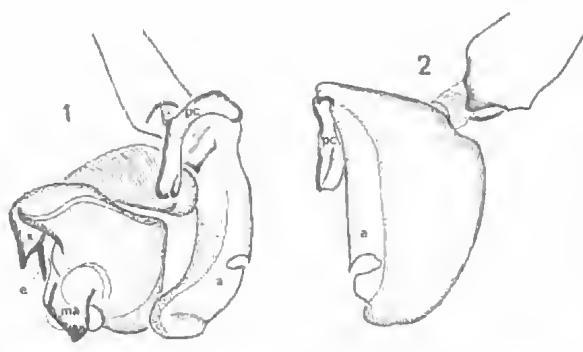
Abdomen: 2.3mm long, 1.9mm wide, light yellow with indistinct grey spots. Dorsal side in posterior third with white band reaching spinnerets. Two flat hooks on dorsal side of abdomen near half of its length. Ventrally lighter in color than dorsal side. Genital opening marked with brown spot.

Legs: Light yellow. Distal parts (excluding tarsi) and II light brown. Femora, tibiae and metatarsi with indistinct light greyish brown spots and rings. Spination as for the genus. Measurements of the legs are given in Table 1.

TABLE 1. Measurements (in mm) of the legs of *Mimetus catulli* (MC), *Mimetus hannemanni* (MH), and *Australomimetus andreae* (AA). Fe = femur, Pt = patella, Ti = tibia, Mt = metatarsus, and T = tarsus.

		I	II	III	IV
MC	Fe	4.5	3.4	2.4	3.0
	Pt	1.0	0.8	0.6	0.7
	Ti	4.7	2.9	1.7	2.2
	Mt	5.0	3.0	1.8	2.3
	T	1.8	1.4	1.0	1.1
MH	Fe	4.4	3.3	2.3	3.0
	Pt	1.1	1.0	0.6	0.7
	Ti	4.5	4.4	1.8	2.6
	Mt	4.8	3.0	1.4	2.2
	T	1.6	1.4	0.7	1.0
AA	Fe	3.9	3.0	1.8	2.2
	Pt	0.9	0.7	0.3	0.5
	Ti	3.9	2.6	1.2	1.9
	Mt	3.6	2.5	1.2	1.8
	T	1.6	1.0	0.8	0.8

Palp: Cymbium (Figs 1, 2) at its dorsal edge with a notched, shovel-like appendage (a). Paracymbium (pc) large, complex; its base largely hollowed out. Distal part of paracymbium long, curved. Bulb large. Tegulum with strong but short apophysis (x) near base of embolus (e). Median apophysis (ma) composed of several flat and shovel-like parts.



FIGS 1, 2. *Mimetus catulli* sp. nov. 1: Right male palpus, retrolateral view. 2: Right male palpus, cymbium, dorsal view. Scale line = 0.2mm.

ETYMOLOGY

The specific epithet is a patronym in honour of the Roman lyric poet Catull.

REMARKS

According to Heimer (1986) the new species is a typical *Mimetus* because of the spination of the legs and the appendage at the dorsal edge of the cymbium. The species can be separated from other *Mimetus* species by the shape of the paracymbium, the cymbial appendage, and the median apophysis.

Mimetus hannemanni sp. nov.
(Figs 3, 4)

MATERIAL EXAMINED

HOLOTYPE: QM S6742, male, Bellenden Ker Range, Cable Tower 3, 1054m, October 17-24, 1981.

DESCRIPTION

Cephalothorax: 2.4mm long, 1.9mm wide, yellow with dark grey pattern. A grey band between l'ovea and petiolus. Cephalothorax in its posterior half with broad grey margin. Eye region dark grey, also some indistinct grey spots between eyes and fovea.

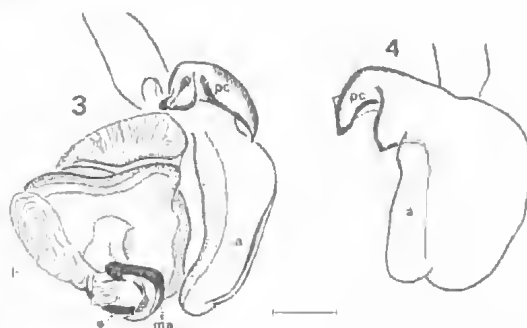
Sternum light yellow with grey spots between coxae I, II. Labium and maxillae light; chelicerae dark brown.

Abdomen: 2.2mm long, 1.5mm wide, light grey with several little white and yellowish spots. Dorsally a white band between the very flat hooks and spinnerets. Ventral side lighter than dorsal. Anterior spinnerets and genital opening marked with little brown spots.

Legs: Yellowish to light brown. Femora with

large grey spots and rings. Also tibiae II - IV with grey rings. Very strong spination in the typical arrangement of the genus. Measurements of the legs are given in Table 1.

Palp: Cymbium (Figs 3, 4) with flat appendage (a) at its dorsal edge. Paracymbium (pc) is a large hook with short lamella (l) near its distal end. At base of paracymbium a large but flat groove. Bulb large. Median apophysis (ma) very complex; at its base a rounded lamella which covers base of embolus (e). Distal end of median apophysis is strong curved swelling.



FIGS 3, 4. *Mimetus hannemanni* sp. nov. 3: Right male palpus, retrolateral view. 4: Right male palpus, cymbium, dorsal view. Scale line = 0.2mm.

ETYMOLOGY

The species is dedicated to Professor Dr H.J. Hannemann, Berlin, who has given valuable help to the author's scientific work.

REMARKS

This species is a typical *Mimetus* according to Heimer (1986). It can be separated from *Mimetus catulli* and other species by the lamella at the base of the median apophysis but also by the shape of paracymbium and cymbial appendage.

Australomimetus andreae sp. nov.
(Figs 5, 6)

MATERIAL EXAMINED

HOLOTYPE: QM S6743, male from Bellenden Ker Range, 0.5km south of Cable Tower 7, 500m, October 17-24, 1981.

DESCRIPTION

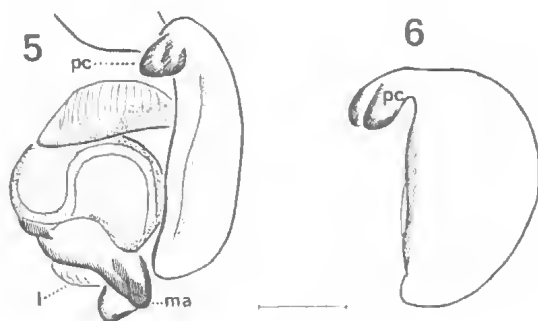
Cephalothorax: 2.1mm long, 1.5mm wide, yellow in colour. Cephalic part light brown with no pattern. Sternum light yellow. Maxillae and labium yellowish brown, chelicerae dark brown.

Abdomen: 2.0mm long, 1.6mm wide, light grey with little white spots. Its dorsal side with some

larger greyish spots which are arranged in two parallel rows between the very flat hooks and the spinnerets. Ventral side unicoloured yellowish. Anterior spinnerets and the genital opening are marked by light brown spots.

Legs: Light yellow. Distal parts (excluding tarsi) with indistinct brown spots and rings. Spination typical as in the Mimetidae, several spines very long and fine. Measurements of the legs are given in Table 1.

Palp: Cymbium (Figs 5, 6) with no appendage, at its dorsal edge only a flat ledge. Paracymbium (pc) simple and small. The large bulbous shows a median apophysis (ma) which is divided in a small lamella (l) at its base and two large rounded lobes distally. The relatively short and strong embolus is seen only in a ventral view of the palp.



FIGS 5, 6. *Australomimetes andreae* sp. nov. 5: Right male palp, retrolateral view. 6: Right male palp, cymbium, dorsal view. Scale line = 0.2mm.

ETYMOLOGY

This new species is dedicated to my daughter Andrea.

REMARKS

This species is a typical *Australomimetes* of the *spinus* group (Heimer, 1986), which is diagnosed by the absence of the cymbial appendage and the spination of the cephalothorax. It can be separated from the other species of this group by its simple paracymbium and the shape of the median apophysis.

Amongst the collections gathered by the Queensland Museum-Earthwatch expedition were new locality records for other species of *Australomimetes*. These were *A. burnetti* Heimer (QM S6744), *A. hirsutus* Heimer (QM S6747), *A. maculosus* (Rainbow) (QM S6748) and *A. daviesianus* Heimer (QM S6745) from Bellenden-Ker Range. The last mentioned species was also collected on Mt Bartle-Frere (QM S6746).

ACKNOWLEDGEMENTS

The author wishes to thank Dr Valerie Davies and Dr R.J. Raven for the loan of Australian mimetids as well as for their help in the preparation of this paper.

LITERATURE CITED

HEIMER, S. 1986. Notes on the spider family Mimetidae with description of a new genus from Australia. *Ent. Abh. Mus. Tierk. Dresden* 49(2): 113-137.